



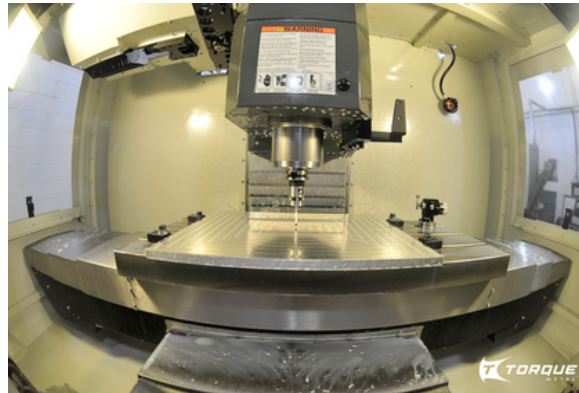
[vendas@torquemetal.com.br](mailto:vendas@torquemetal.com.br)  
[www.torquemetal.com.br](http://www.torquemetal.com.br)

### **Manufacturing**

Last generation machines and constantly looking forward to new technology.

### **Product and Market**

Our team is prepared and flexible to the most several challenges



### **Quality**

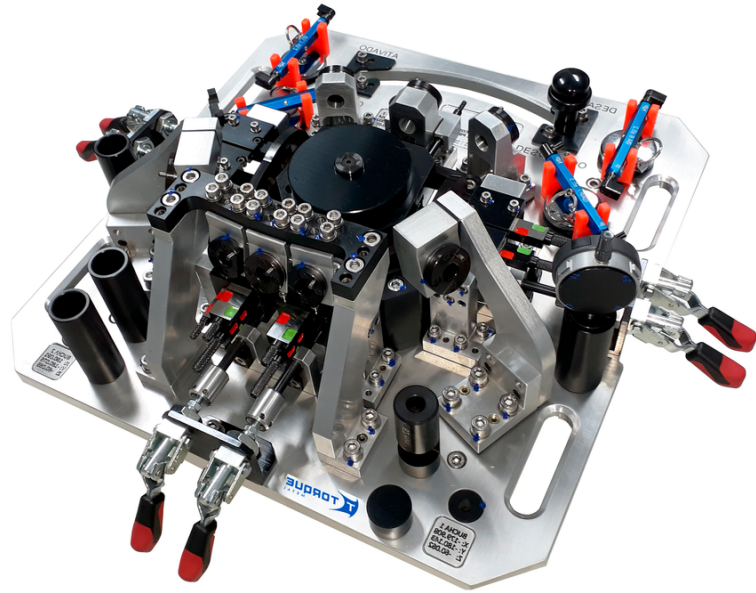
We look forward to quality excellence through our committed team

### **HR ( Human Resources )**

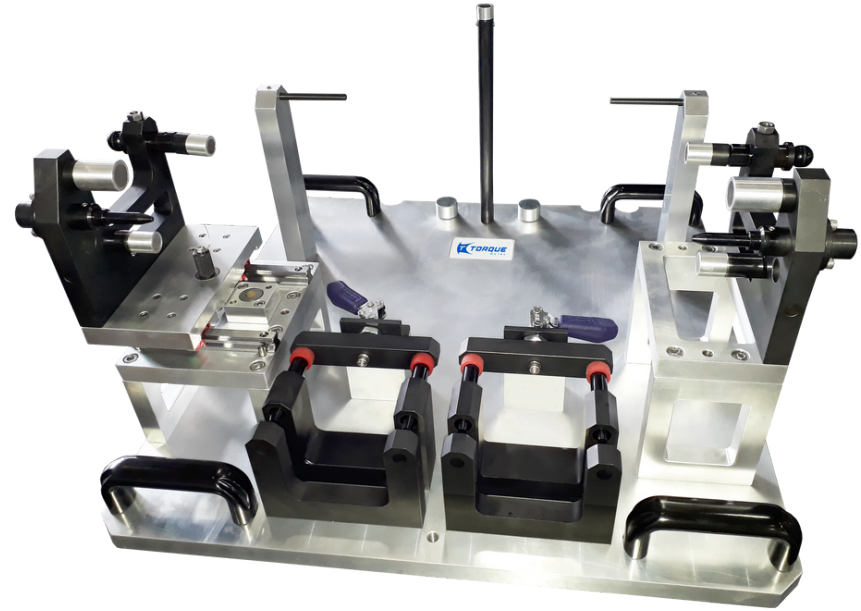
From recruitment to development, our strategy is based on competence



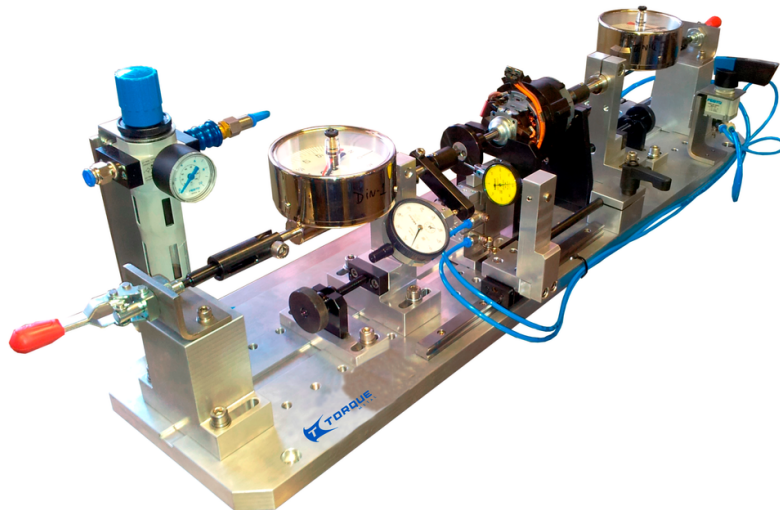
# GD&T DEVICES



CONTROL DEVICE FOR AIR BAG



SEAT CONTROL DEVICE - VW

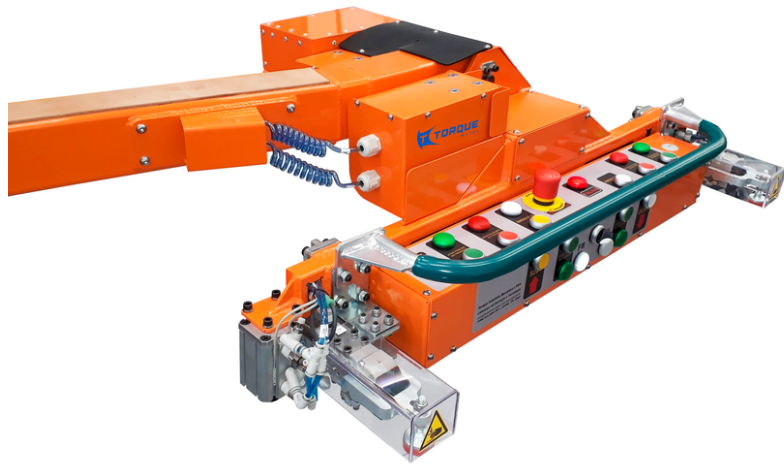


MEASURING DEVICE OFF DRIVESHAFT



CABLE LENGTH MEASURING MACHINE

# LIFTING DEVICES



MANIPULATOR - TRUCK PANEL



VACUUM LIFT



VACUUM LIFT - COCKPIT PART



CLUTCH LIFTING

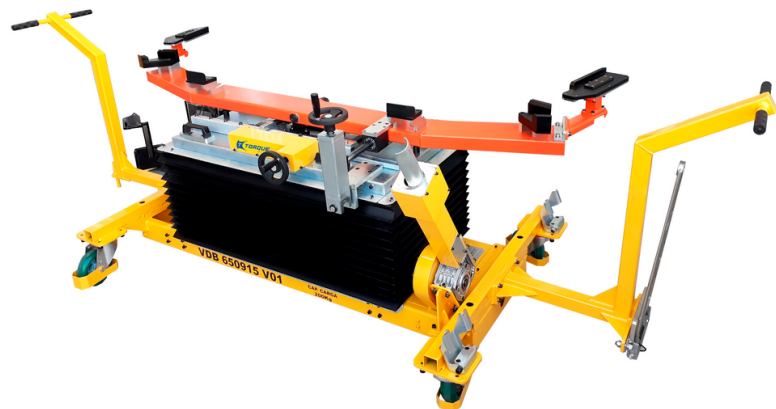
# INDUSTRIAL SOLUTIONS



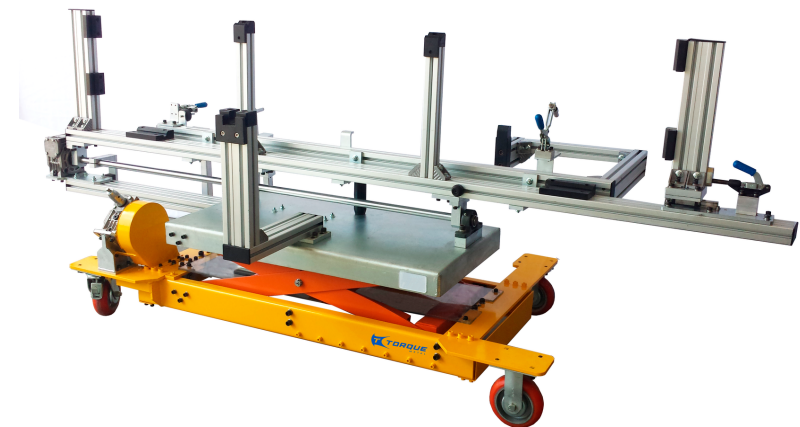
ASSEMBLY DEVICE



MOUNTING THE RUBBER ON THE DOOR

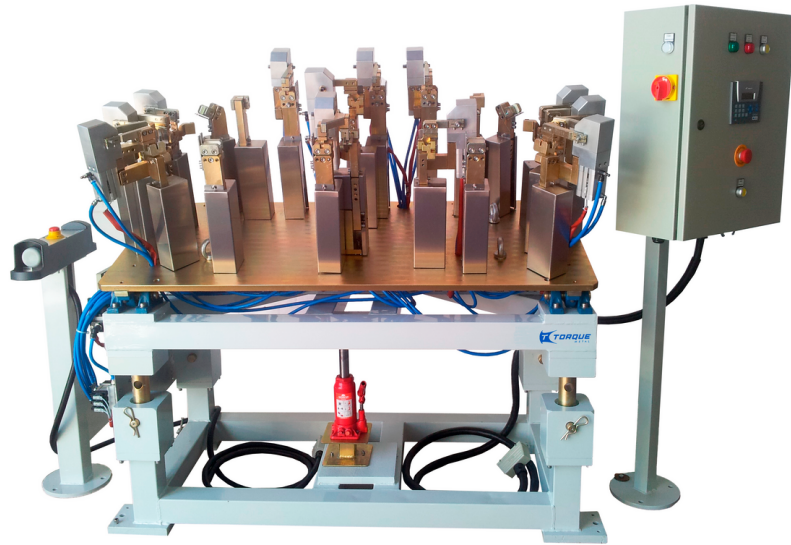


BUMPER - ASSEMBLY

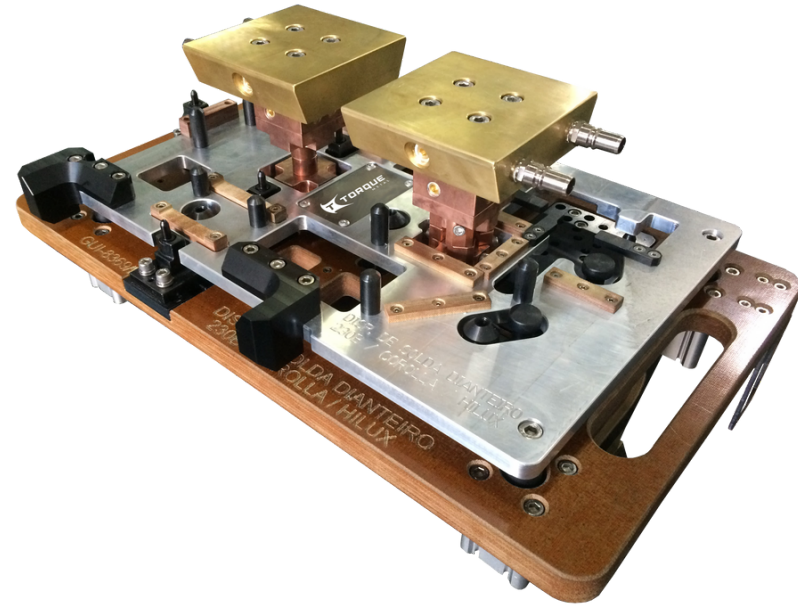


COCKPIT - ASSEMBLY

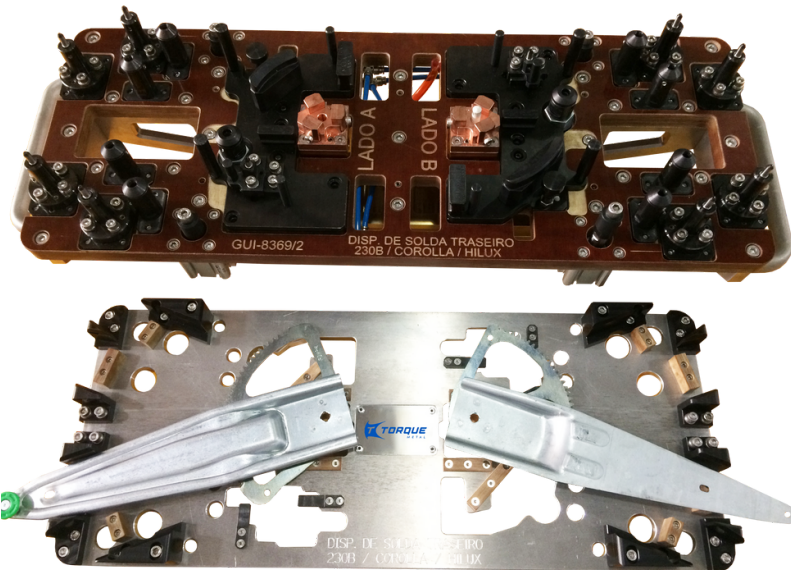
# WELDING SOLUTIONS



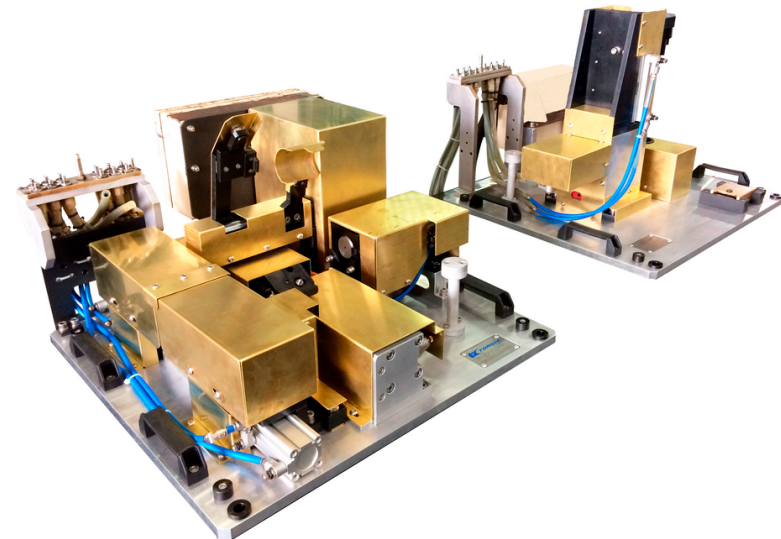
**AUTOMATIC ASSEMBLY DEVICE FOR WELDING**



**WELDING DEVICE**



**WELDING DEVICE - WINDOW PART**



**STEERING COLUMN**

# STORAGE / TRANSPORT RACKS



ENGINE RACK



ASSEMBLY AND MUFFLER TRANSPORTATION

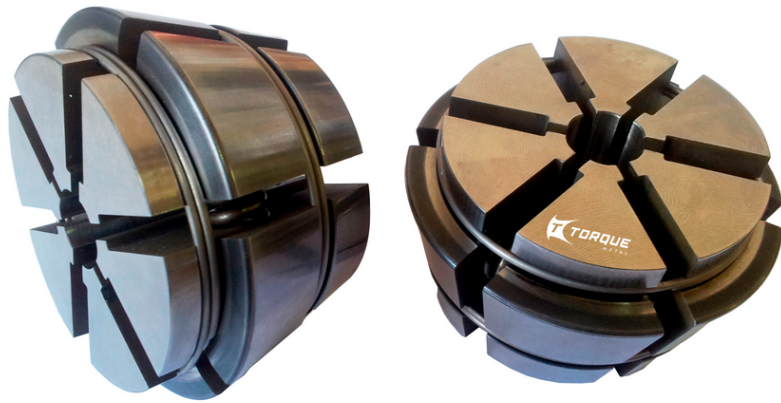


OIL PAN ASSEMBLY



COMPACT RACKS

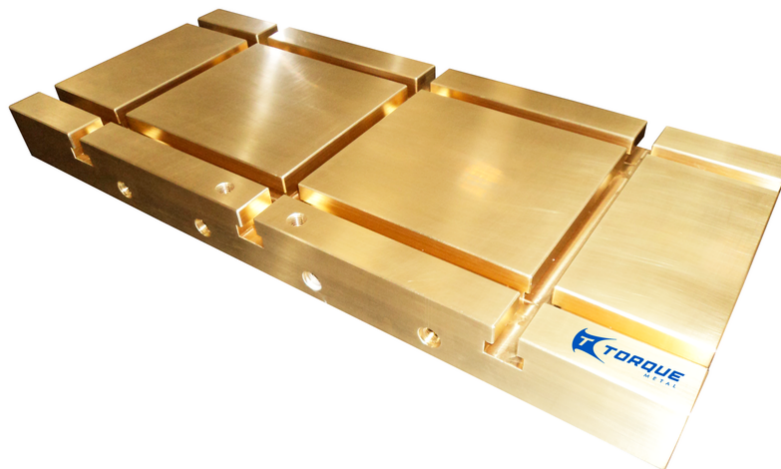
# TOOLING COMPONENTS



TRACTION CLAMP



LATHE GEAR



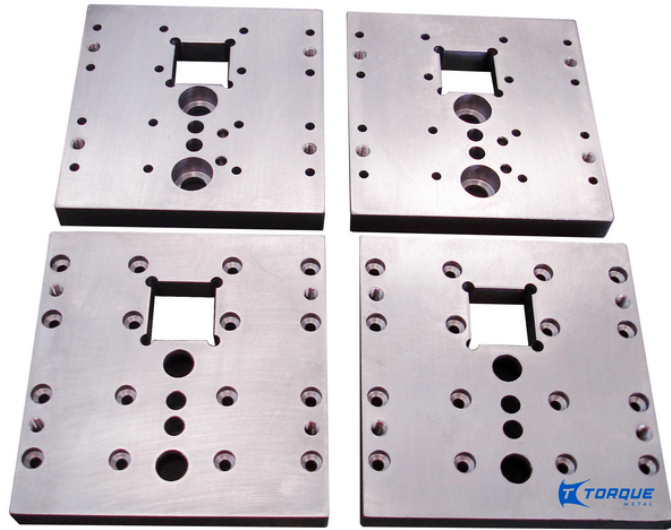
WELDING MACHINE BRASS PART



DEVICE FOR GRINDING MACHINE



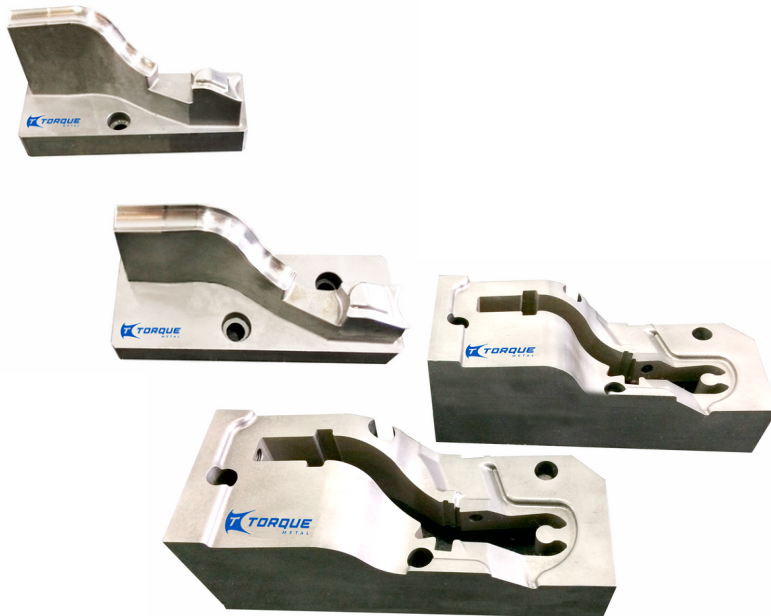
# TOOLING COMPONENTS



TOOLING PARTS



BEARING BALLS ASSEMBLY



DIE PLATE

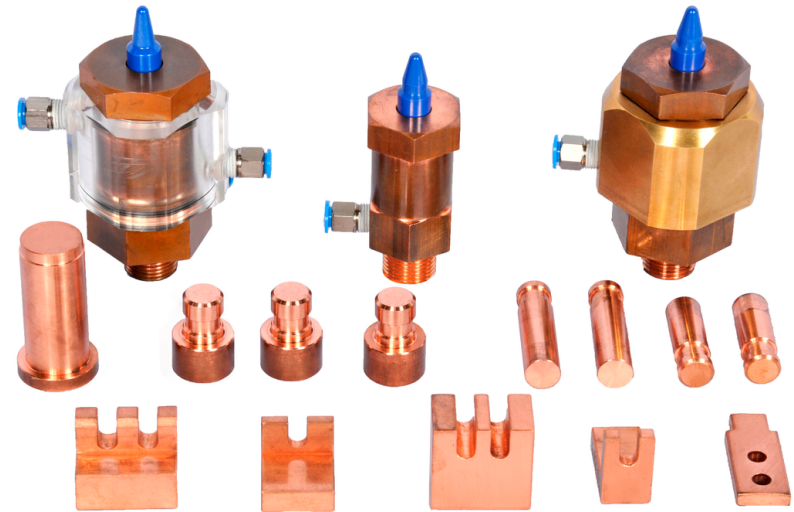


BUSH

## CERAMIC PINS/PARTS



3<sup>RD</sup> GENERATION CERAMIC PINS



SPECIAL DESIGN WELDING ELECTRODES



FORMING ROLLERS / BUSH / SPACERS

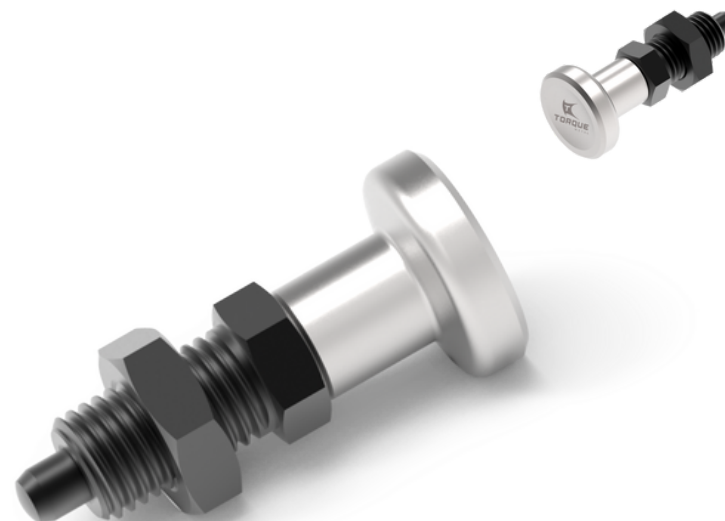


LOCATING / CENTRING PINS

# TORQUEMETAL STORE

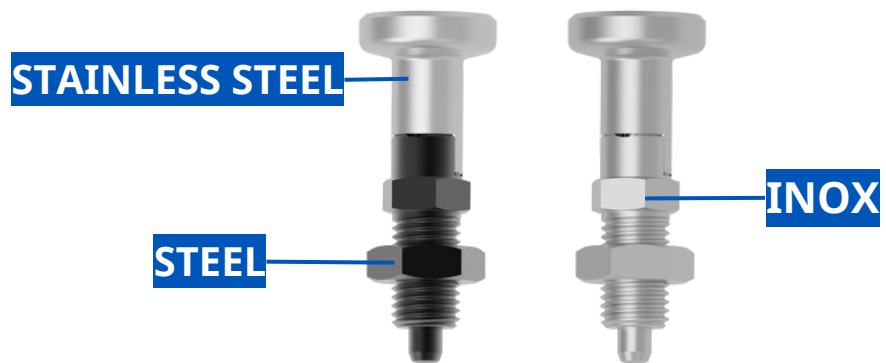


STEEL AND STAINLESS STEEL INDEX - REST POSITION

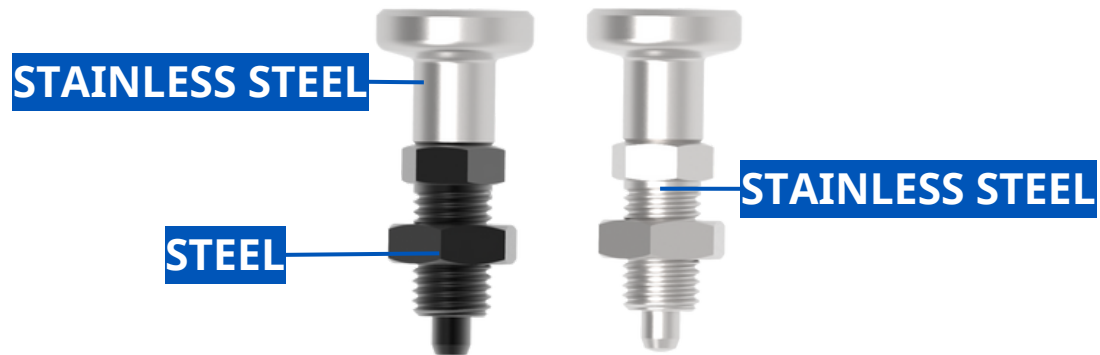


STEEL AND STAINLESS STEEL INDEX- WITHOUT REST POSITION

## MATERIALS



## MATERIALS



# EXCLUSIVE REPRESENTATION IN BRAZIL

Ceramic · Plastic · Steel · Cement · 3D Composite Systems



## MOESCHTER GROUP

High performance materials, processes, technologies  
Standards and customized components  
highly complex modules & systems, combining different materials

**DOTHERM** - Hightech insulation and slide materials

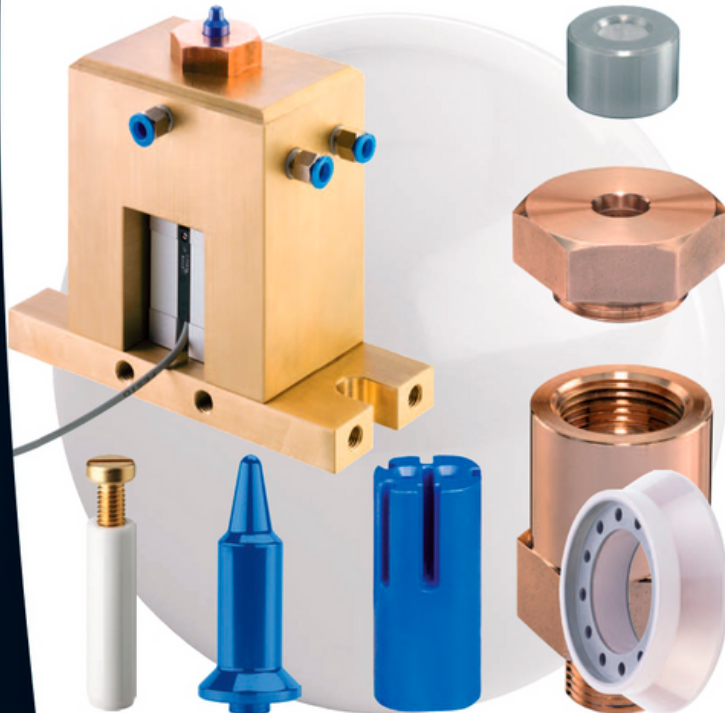
**DOCERAM** - Multi resistant engineering ceramics

**DOCRAFT** - Metal-supports and -protectors

**STS Friction** - friction pads, clutch pads, retaining-pads, drive pads

**DOCERAM China** - Ultimatic Ceramic Technologies

**DOPRESION China** - Precision plastics components



Your visions  
will come true –  
for sure!

- > Open communication,
- > safe construction,
- > quick cooperation!
- > Construction
- > Development
- > Dimensioning of component
- > Project management
- > CAD/ SolidWorks
- > FEM/ simulation
- > Prototyping/ samples
- > Batch/ large-batch production
- > QM

Standards and customized  
components, Combination of  
different materials concerning  
modules & systems



**DOCERAM**<sup>®</sup>  
ADVANCED CERAMIC SOLUTIONS

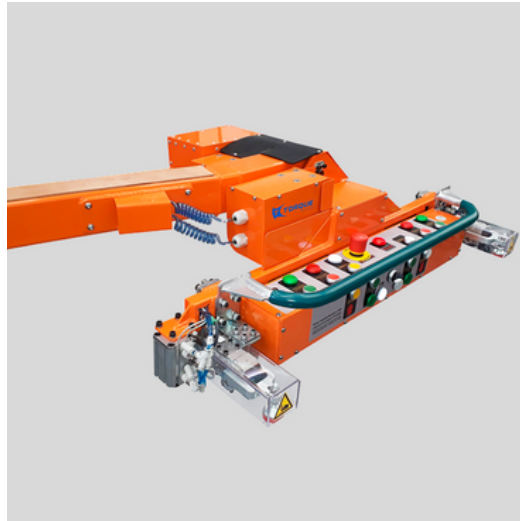
Fotografie, Grafik, Text, all rights reserved by MoS-Media Group BRD#TH+1.11.2012, MOESCHTER GROUP®, DOTHERM®, DOCERAM®, STS Friction®, Engingerege Warenzeichen: Cerazur®, Vöckers®, Zi 017 Nacera®



## SOLUTIONS



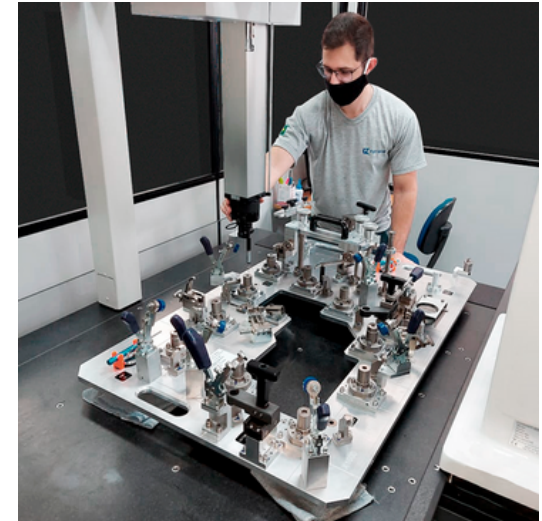
**PROJECT**



**AUTOMATION**

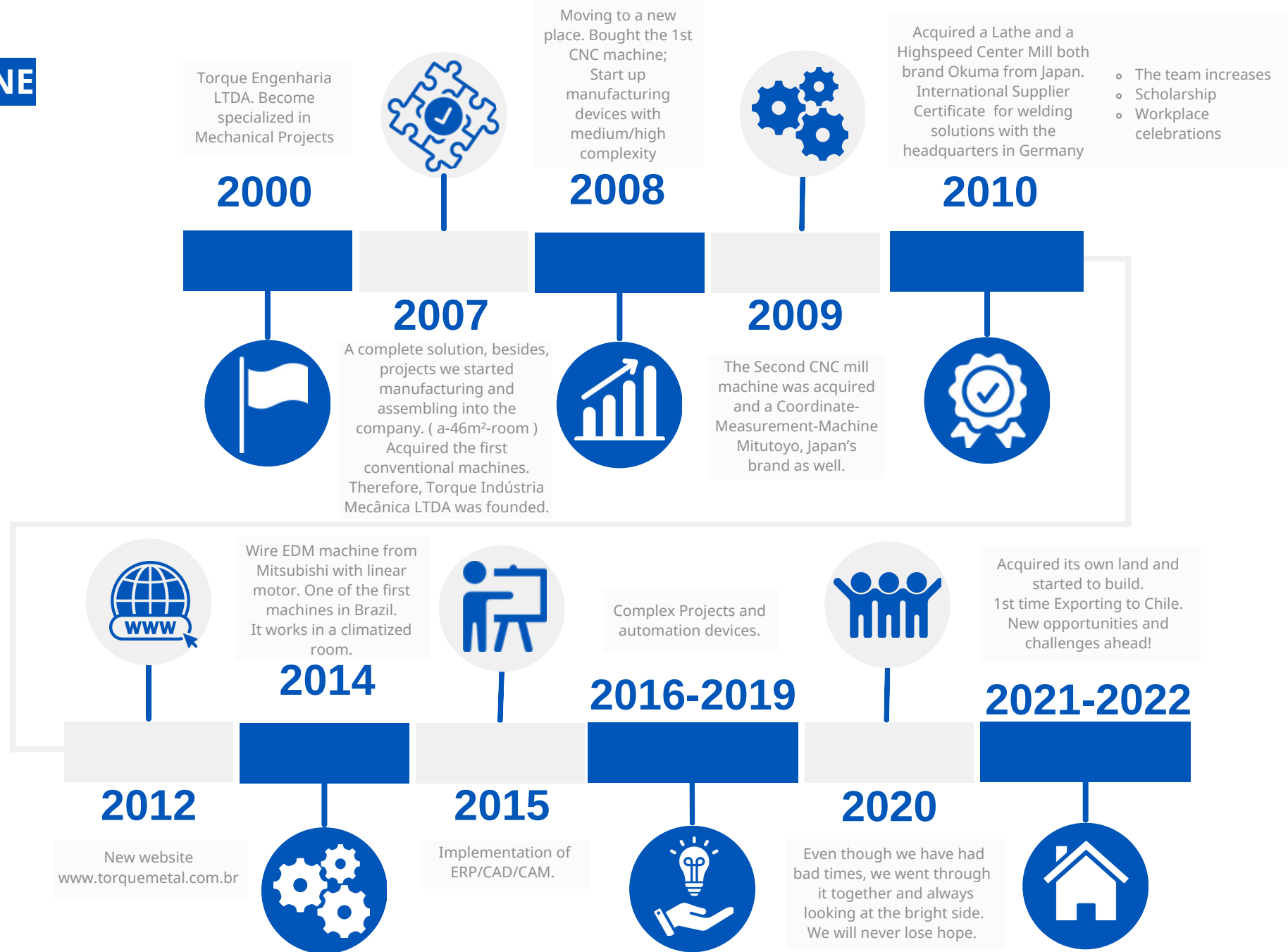


**TOOLING**



**MEASUREMENT CMM**

# TIMELINE





## MISSION

Our mission is to offer parts with the most sustainable, innovate and technological solutions to the customers



## VISION

Become a well-known company recognized for its **quality** and **reliability** of its products and services



## VALUES

Respecting human rights and the environment.  
Ethic, good behavior, punctuality, obey the laws, empowerment, motivation and teamwork are essential to achieve our goals which makes our company useful and worthy to the society

## GOALS

Be the first option of our customers;  
 Develop superior product/service compared to the other in the market;  
 Build and keep long-lasting client and supplier relationships;  
 Become a well-known company recognized for its quality and reliability of its products and services;  
 Sustainable Development following the standards;

## MANAGEMENT SYSTEM

Focus on our clients and goals	<b>COMMITMENT</b>
High Quality products/process	<b>DRIFT</b>
Ensure long-lasting sustainable results	<b>KAIZEN</b>
Good Behavior following the goals and values	<b>GOOD BEHAVIOR</b>
New technologies and research Investment	<b>INNOVATION</b>

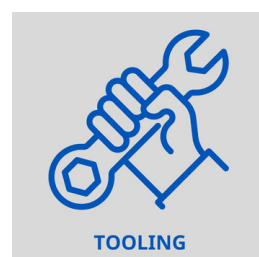
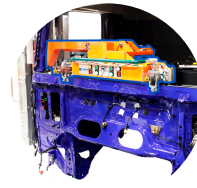
## RESULT INDICATORS

<b>S</b>	<b>SAFETY</b>	Zero accidents ( Employees x Supplier)
<b>Q</b>	<b>QUALITY</b>	Zero Defect Manufacturing
<b>C</b>	<b>COST</b>	Cost Viability
<b>V</b>	<b>SALES</b>	Keep planned sales target without delay
<b>D</b>	<b>IMPROVEMENT</b>	Self-development
<b>I</b>	<b>INNOVATION</b>	Keep Investing in new technologies, KAIZEN



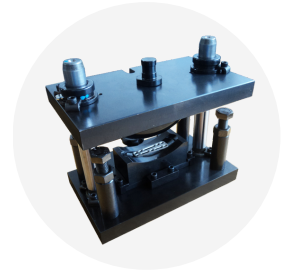
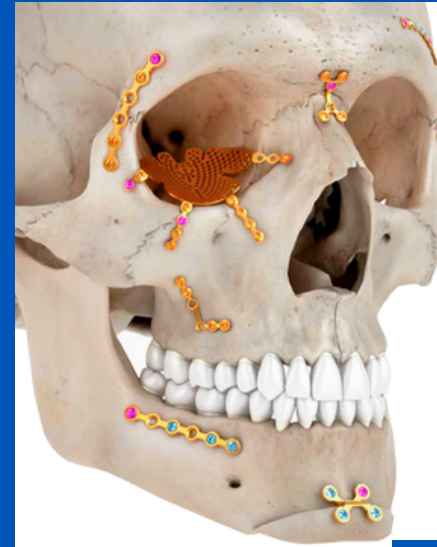
## SERVED SEGMENTS

Focus on results and long-term partnerships, we work to provide innovative solutions to companies from different business as automotive, food, agriculture, aesthetic, aerospace and others. We design machines, devices/calipers and high precision parts in order to excel our customers expectations. Safety, Quality and Sustainability come first.





**AGRICULTURE**



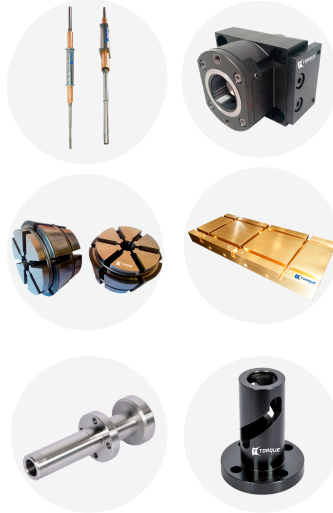
**MEDICINE SEGMENT**



**BIG VEHICLES**



**PHARMACEUTICAL**



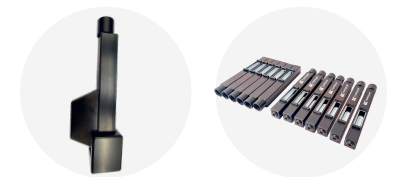
**TOOLING**



**HOME APPLIANCES**



**OFFSET PRINTING  
BUSINESS**



**AESTHETIC**

**CUSTOMERS**

**VOLVO**

**TIDEWISE**

 **BOSCH**

 **COMP**

 **NEOORTHO**

 **GRAHAM  
PACKAGING  
COMPANY INC.**

**brose**  
Technik für Automobile

**UEPG**  
Universidade Estadual  
de Ponta Grossa

**SANDVIK**  
Coromant

**CNH**  
INDUSTRIAL

**faurecia**

**BÜHLER**

 **DOCERAM**  
ADVANCED CERAMIC SOLUTIONS

**DENSO**

 **Electrolux**

 **FIAT**

**advaltech**

 **NEODENT**

**JTEKT**

**Continental**  
The Future in Motion

 **hi**

 **NISSAN**

**UTFPR**  
UNIVERSIDADE TECNOLÓGICA FEDERAL DO PARANÁ

 **EXÉRCITO BRASILEIRO**

**Autotec**  
Fuji Autotech Autopeças do Brasil Ltda.

**Stara**  
Evolução Constante

 **Agres**

 **POSIGRAF**

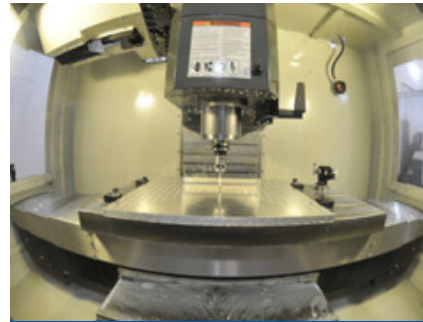
## MACHINES



OKUMA HI-SPEED MILLING CENTER



HAAS MILLING MACHINE



MILLING MACHINE



OKUMA LIVE TOOL LATHE



CONVENTIONAL MILL



MITSUBISHI WIRE EDM



OKAMOTO SURFACE GRINDER



MITUTOYO CMM



HAAS CNC MILL 3 AXIS



CONVENTIONAL LATHE

## Contact us:



[vendas@torquemetal.com.br](mailto:vendas@torquemetal.com.br)



+55 41 3288-1401



[www.torquemetal.com.br](http://www.torquemetal.com.br)